

Summary of
**COMMUNITY
INVESTMENTS**
2010-2012



contents



What is “LIVE UNITED”	1
History.....	2
The Fund Distribution Process.....	3
Funding—Basic Needs.....	4
Funding—Self-Sufficiency.....	5
Funding—Children & Youth.....	6
Funding—Health & Wellness.....	7
Program Summaries—Basic Needs.....	8
Program Summaries—Health & Wellness.....	10
Program Summaries—Self Sufficiency.....	10
Program Summaries—Children & Youth.....	12
The Big Picture.....	15
Panel Volunteers.....	16
Community Investment Team Members.....	17



what does it mean to **LIVE UNITED?**



TO LIVE UNITED is a constant reminder that when we, as individuals, think outside ourselves, we have the power to facilitate change.

When we think of other lives as linked to our own, our compassion grows.

When we reach out a hand to one, we influence the condition of all.

We build the strength of our neighborhoods.

We bolster the health of our communities.

We change the lives of those who walk by us every day.

It is a command:

TO GIVE. TO ADVOCATE. TO VOLUNTEER.

Because united, we stand. United, we elevate.

United, we persevere. United, we move through, above, and beyond. United, we can change what we see in our world.

LIVE UNITED is about the POWER of UNITY.



seven decades of community care



2009

United Way celebrates
70 years of caring!

2007

Campaign raises
\$7.3 million.

1991

Campaign raises
more than \$6 million.

1983

Campaign raises
more than \$3 million.

1966

United Way has first
\$1 million campaign.

1957

Hampton & Newport News
Community Chests combine
to form United Way,
raising \$800,000.

1943

Hampton Community Chest
is formed, raising \$45,000.

1939

Newport News Community Chest
is formed, raising \$34,304.

Hundreds of
Peninsula
businesses
conduct
United Way
campaigns
to provide
employees
with the
opportunity to
“give back”
to the
community.



a four-step process

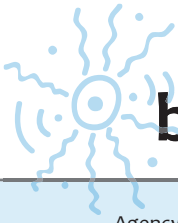


1. Donors designate contributions to the network of certified United Way Partner Agencies offering a wide variety of programs to our community.

2. Agencies submit funding requests to United Way.

3. Panels of volunteers review each request and visit the agencies. They carefully evaluate program goals and results and make recommendations about which programs should receive United Way support.

4. The volunteer Community Investment Team joins United Way staff in making the final funding recommendations.



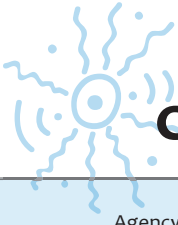
basic needs

Agency & Programs	United Way Allocation	Donor Designations		Total
		United Way	CFC & Other Federations	
American Red Cross-Hampton Roads				
Disaster Services	98,000			
Armed Forces Emergency Services	36,000			
Total	134,000	58,617	21,596	214,213
American Red Cross-York/Poquoson				
Health & Safety Services	8,000			
Armed Forces Emergency Services	8,000			
Disaster Services	8,000			
Total	24,000	22,487	32,301	78,788
Foodbank of the Virginia Peninsula				
Food Distribution Program	110,000			
Total	110,000	117,764	73,242	301,006
LINK of Hampton Roads				
Emergency Services	40,500			
CANLINK Permanent Supportive Housing	40,000			
Building Bridges	9,000			
PORT Emergency Winter Shelter	30,000			
Total	119,500	17,474	7,539	144,513
Salvation Army/Peninsula Command				
Emergency & Supplemental Food	30,000			
Homelessness Intervention	99,784			
Utility Assistance	99,406			
Total	229,190	44,020	23,363	296,573
Transitions Family Violence Services				
Emergency Shelter	57,038			
Counseling Program	28,000			
Legal Advocacy	15,000			
Volunteer Program	5,962			
Hotline	19,000			
Children's Program	15,000			
Total	140,000	27,701	3,588	171,289
Total for Basic Needs	756,690			



self sufficiency

Agency & Programs	United Way Allocation	Donor Designations		Total
		United Way	CFC & Other Federations	
The Arc of the Virginia Peninsula				
Waiver - Funded Residential Services	27,000			
Puller Center	18,000			
Early Prevention and Intervention	54,000			
Total	99,000	19,652	5,091	123,743
Catholic Charities of Hampton Roads				
Child Welfare Services	6,000			
Adult/Senior Care	10,000			
Mental Health	5,000			
Total	21,000	65,570	16,186	102,756
Gloucester Housing Partnership				
Repair of Homes in Gloucester	25,000			
Total	25,000	7,325	354	32,679
Peninsula Agency on Aging				
MedTran (medical transportation)	25,000			
S.O.S (Senior Outreach to Services)	13,850			
Total	38,850	26,635	2,513	67,998
Peninsula READS				
Basic Literacy Program	28,709			
English for Speakers of Other Languages	29,291			
Total	58,000	13,966	4,503	76,469
RSVP of the Virginia Peninsula				
Service to Community Organizations	20,000			
Total	20,000	3,568	129	23,697
USO of Hampton Roads				
Family Outreach	12,000			
Total	12,000	23,165	7,168	42,333
Total for Self Sufficiency	273,850			



children & youth

Agency & Programs	United Way Allocation	Donor Designations		Total
		United Way	CFC & Other Federations	
Alternatives				
Monart Visual Art Enrichment Program	59,000			
Total	59,000	10,190	246	69,436
Bacon Street				
Youth Substance Abuse Prevention	26,000			
Total	26,000	4,094	1,102	31,196
Big Brothers Big Sisters				
Community Program	48,333			
School-Based Program	10,686			
Total	59,019	1,542	0	60,561
Boy Scouts of America				
Scoutreach Services to "At-Risk" Youth	40,000			
Total	40,000	51,634	18,328	109,962
Boys & Girls Clubs of the VA Peninsula				
After School Program	282,100			
Summer Adventures Program	132,711			
Total	414,811	69,043	11,157	495,011
Center for Child & Family Services				
Individual & Family Mental Health Therapy	48,000			
Youth Empowerment Services/PATTS	25,000			
Hispanic Outreach	12,350			
Peaceful Choices	22,000			
Safe Harbor for Kids	26,500			
Fresh Start Program	16,150			
Total	150,000	11,407	1,144	162,551
Child Development Resources				
Infant-Parent Program	45,000			
First Steps Child Care & Development	10,000			
Total	55,000	17,127	784	72,911
Dwntwn. Hpt. Child Development Center				
Preschool for At-Risk Children	110,000			
Total	110,000	25,150	2,214	137,364



children & youth (continued)

Agency & Programs	United Way Allocation	Donor Designations		Total
		United Way	CFC & Other Federations	
Girl Scout Council of Colonial Coast				
Girl Scouting At-Risk Outreach Programs	30,000			
Total	30,000	13,759	4,210	47,969
Girls Inc. of the Greater Peninsula				
After School Program	80,000			
Summer Camp	20,000			
Total	100,000	5,036	2,833	107,869
YMCA - Peninsula Metropolitan				
Star Achievers	27,000			
Preschool Children	40,500			
Total	67,500	19,053	1,318	87,871
YWCA Virginia Peninsula				
Leaders of Tomorrow	25,000			
Youth Prevention Program	20,000			
Women's Empowerment Program	15,000			
Total	60,000	4,754	650	65,404
Total for Children & Youth	1,171,330			



health & wellness

Agency & Programs	United Way Allocation	Donor Designations		Total
		United Way	CFC & Other Federations	
Edmarc Hospice for Children				
Pediatric Hospice Program	12,000			
Total	12,000	32,017	3,596	47,613
Planned Parenthood of SE Virginia				
"Real Life-Real Talk" 9th Grade	48,000			
Total	48,000	14,172	10,960	73,132
Total for Health & Wellness	60,000			

program summaries



Basic Needs

American Red Cross-Hampton Roads Chapter

Disaster Services –Provides immediate emergency assistance and funds for food, shelter and clothing to victims of fires, storms or other disasters.

Armed Forces Emergency Services (AFES)- Provides emergency communications and assistance deployed military members and their families in Newport News, Hampton and Isle of Wight County.

American Red Cross-York/Poquoson Chapter

Health and Safety- Trains individuals, business, private, youth and families to respond to emergency situations.

Disaster Services- Help people to be self sufficient during and after a disaster event. i.e. hurricane, tornado as well as single family emergencies.

Armed Forces Emergency Services (AFES)- Provide emergency communications between families and deployed military members in York County and Poquoson.

Foodbank of the Virginia Peninsula

Food Distribution Program-Distributes food to those in need in the community. Distributes over 8 million pounds of food regularly.

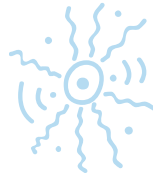
LINK of Hampton Roads

Building Bridges –Assists individuals and families through crises and work to eliminate the behaviors that lead to crisis situations.

Emergency Services- Various services to assist the impoverished, physically/ mentally disabled, HIV/AIDS, substance abusers, elderly, terminally ill and homeless including: providing food, furniture, gifts at holiday time, etc.

CANLINK Permanent Supportive Housing Programs- Provides permanent supportive housing for individuals/families who have been homeless/ chronically homeless with the adult in the household having a documented disability.

PORT Emergency Winter Shelter- Offers emergency shelter and meals, initially, and then on-going assistance responding to the basic needs of the homeless population for 20 weeks during the winter months.



● **The Salvation Army Peninsula Command**

● **Homelessness Intervention-** Cluster of services designed to intervene in crisis situation when individuals and families are either rendered homeless or threatened with eviction.

● **Emergency & Supplemental Food-** Distributes food to the homeless and households of low income individuals.

● **Utility Assistance-** Assists individuals with their utility bills when services have been suspended or are under notice of disconnection.

● **Transitions Family Violence Services**

● **Emergency & Short-Term Shelter Program-**Offers a sanctuary from abuse, increase's clients' knowledge about a violence-free life and empowers client to make the best decisions in the best interest of their family.

● **Counseling Program for Domestic Violence Victims in Crisis-**Provides child clients with services necessary to reduce trauma, meet essential needs and encourage positive character development.

● **Legal Advocacy-**Provides comprehensive training on the dynamics of domestic violence, relevant domestic violence laws and available community resources to allied professionals providing key service delivery to victims. Also provides court advocacy, information and referral and supports sheltered and outreach victims of family violence.

● **Volunteer Services-**Program allows community citizens to engage in Transitions' mission by volunteering to offer crisis intervention, support, advocacy and information and referral assistance to victims of family violence.

● **Hotline Program-**Provides 24-hour support for victims of family violence, family members, professionals and concerned others. Children's Program for Domestic Violence Victims in Crisis-Provides assessment, crisis intervention, and comprehensive academic, childcare, and psychological support for child victims of family violence.

● **Self-Sufficiency-** Provides safe, affordable housing, intensive case management, advocacy, counseling and other transitional supportive services to high-risk victims of family violence.

program summaries



Health & Wellness

Edmarc

Pediatric Hospice Services-Assists families in understanding their grief and adapt to life following the death of a terminally ill child.

Planned Parenthood of Southeastern Virginia

“Real Life, Real Talk” Peninsula 9th Grade Sex Education Program-An abstinence-plus sex education program that interlaces information on emotionally healthy relationships and medically accurate, age appropriate sexuality for teens, enhancing their ability to make responsible decisions in the future about their reproductive health.

Self Sufficiency

The Arc of the Virginia Peninsula

Waiver-Funded Residential Services-Provides safe, caring and supportive homes, typical of a community, to people with developmental and related disabilities.

Puller Center (Gloucester)-Provides a structured and supervised, community-based work environment that provides employment training and employment opportunities to clients with mental retardation, developmental delays, and/or other physiological disabilities.

Early Prevention and Intervention for Children (EPIC)-Identifies children with disabilities or developmental delays and coordinates the appropriate therapy programs needed for them to grow and thrive.

Catholic Charities of Eastern Virginia

Adult and Senior Care- Assists and supports adults and the frail elderly maintain dignity, independence, and quality of life.

Child Welfare-Assists parents with the establishment of a secure and safe plan for their children through the provision of free pregnancy counseling, linkages to community resources, educational assistance, development of parenting plans, and baby items.

Mental Health- Provides crisis and clinical mental health services to uninsured individuals, couples and families on a sliding scale.

program summaries



Self Sufficiency (continued)

Gloucester Housing Partnership

Home Repair-Repair homes of low-income families in Gloucester County.

Peninsula Agency on Aging

MedTran-Volunteer provided non-emergency medical transportation (to doctors, medical test, Rx, etc.)

S.O.S. (Senior Outreach to Services)-Provides access to community services to seniors living in subsidized housing.

Peninsula READS

Adult Basic Literacy-Teaches adults, through personalized instruction, the literacy skills they need to participate fully in society.

Adult English as a Second Language (ESL)-Provides basic instruction to foreign-born adults who are 18 years of age or older, who are not enrolled in high school or college, in Hampton, Newport News, Poquoson, and York County.

RSVP of the Virginia Peninsula

RSVP- Provides senior volunteers to nonprofits and health facilities to provide services to clients to free up paid staff to perform other essential duties.

USO

Family Outreach-Is a pro-active program that reaches out to military members and families in need of community and family support.

● ● program summaries



Children & Youth

● Alternatives

● **Monart Visual Art Enrichment Program**-Introduces a creative media to young and at-risk people or those living in poverty, where they learn skills such as sequencing, decision making and problem solving. This creative expression provides foundational skills that support literacy and academic achievements.

● Bacon Street

● **Youth Substance Abuse Intervention and Treatment**-Provides services for age 19 and under who may be experiencing problems with alcohol or other drugs, or who are at high risk for such problems.

● Big Brothers/Big Sisters of the Virginia Peninsula

● **Peninsula School Based Mentoring**-pairs a caring, competent adult with youth during the school day to support their academic growth and development.

● **Peninsula Community Based Program**-pairs a caring, competent adult with youth to expose them to experiences outside of their school and normal home environment.

● Boy Scouts of America, Colonial Virginia Council

● **Scoutreach Services**-An educational program targeted at boys and young adults in underserved neighborhoods, to build character, to train in the responsibilities of participating citizenship and to develop personal fitness.

● Boys & Girls Clubs of the Virginia Peninsula

● **After School Program**- Provides a positive, safe environment and programming to engage children to prevent negative behavior that tends to happen in the critical after school hours.

● **Summer Adventures**- Provides a positive, safe environment and programming to engage children to prevent negative behavior for 10-12 weeks during the summer months.

program summaries



Children & Youth (continued)

Child Development Resources

Infant-Parent Program- Full day, year-round early care and development for low-income families. Program available for children ages birth to three, who have developmental delays, diagnosed disabilities or atypical development.

First Steps Child Care and Development Center- Full day, year-round early care and development for low-income families. Program targets children ages six weeks to three years who live in York County.

Center for Child & Family Services

Mental Health Therapy- Assists individuals and families in developing positive coping skills to deal with life stressors.

Youth Empowerment Program- An early intervention program for youth who have demonstrated aggressive behavior. Prevention designed to develop leadership groups in schools that will work collaboratively with the school administration to reduce the incidents of bullying and violence.

Peaceful Choices Adult Anger Management Prevention- Violence prevention program that focuses on teaching positive conflict resolution skills for men and women who have displayed violent behavior toward a significant other or within the community.

Safe Harbor- Supervised Visitation Program- Provides a safe and neutral location for non-custodial parents to visit on-site, when a court or social service agency requires that visits with children be supervised.

Fresh Start Program- In collaboration with the Criminal Correction Division and State Probation and Parole office, provides job readiness skills training and assistance in finding employment for probationary men and women.

Hispanic Outreach Program- Offers case management to connect the Hispanic population with community resources such as language classes, legal services, immigration assistance and health care.

Downtown Hampton Child Development Center

Preschool- Provides quality childcare for at-risk and underserved children, including children with disabilities.

program summaries



Children & Youth (continued)

Girl Scout Council of Colonial Coast

Girl Scouting At-Risk Outreach Programs-Fulfills the need of an educational and social development program for girls requiring a safe environment with positive adult role models.

Girls, Inc.

Afterschool Program- Targets girls age 4-14 to participate in prevention programs afterschool to stimulate and nurture their intellectual and emotional development.

Summer Camp-Provides positive life skills and social skills that help girls adopt positive peer groups and succeed in school.

Peninsula YMCA

Star Achievers' Academy-In conjunction with Cooper Elementary Magnet School for Technology, provides innovative programs, tools and resources necessary for academic and personal success of children.

Newport News Family YMCA Preschool-Offers affordable, quality childcare for low to moderate income working families.

YWCA of the Virginia Peninsula

Leaders of Tomorrow-Encourages students to explore post high school options and develop strong leadership skills through workshops, job shadowing and mentoring.

Youth Prevention Program- Challenges youth to make positive decisions and develop critical conflict resolution skills through summer school and after school programs.

Women's Empowerment- Offers first time homebuyer's classes, health and wellness programs, domestic violence awareness and offers training to women who are in the community work experience program.



the big picture



Total Distribution of 2009 United Way Funds

HOW IT CAME IN...

United Way Campaign Pledges	\$ 4,378,304
CFC Campaign Pledges ¹	1,917,233
Other Revenue	421,718
TOTAL	\$ 6,717,255

HOW IT WILL GO OUT...

Donor Designations ²	\$ 2,705,325
Allocations to Agencies & Programs ⁵	2,281,869
Operating Budget	1,161,377
Pledge Loss ³	434,184
Contracts & Services ⁴	134,500
TOTAL	\$ 6,717,255

NOTES:

¹“CFC” stands for Combined Federal Campaign, the only authorized campaign for federal, civilian, and military employees.

²“Donor Designations” are contributions donors direct to specific agencies. This includes contributions through the Combined Federal Campaign.

³“Pledge Loss” refers to pledges we estimate will not be collected due to lay-offs, terminations, people moving, or business closings.

⁴“Contracts & Services” refers to expenses related to operation of our First Call Information and Referral service, and The Volunteer Center.

⁵Includes a \$20,000 allocation to the Regional Dental Clinics, a collaborative effort that includes Gloucester-Mathews Free Clinic, Lackey Free Clinic, and HELP Free Clinic.

panel volunteers



The following individuals volunteered their time to help make funding recommendations:

Amy Barrack	<i>Riverside Behavioral Health Center</i>
Malik Brice	<i>Newport News Juvenile Services</i>
Carter Ficklen	<i>Ficklen & Associates</i>
Courtney Gardner	<i>CE Gardner Consulting</i>
Linda Gray	<i>Community Volunteer</i>
Donna Grubbs	<i>Riverside Regional Medical Center</i>
Jerri Hickmann-Joyner	<i>N.N. Redevelopment & Housing</i>
Michael Holmes	<i>Booz Allen Hamilton</i>
Patricia Johnson	<i>Hampton City Schools</i>
Dedra Jordan	<i>New Horizons Regional Educ. Center</i>
Joel Kirsch	<i>Newport News Dept. of Social Services</i>
Tim Lauth	<i>Northrop Grumman Newport News</i>
Ivy Lee	<i>Hampton City Schools</i>
Tiffany Lewis	<i>Northrop Grumman Newport News</i>
Brenda McPherson	<i>William E. Wood & Associates</i>
Matthew Meadows	<i>Jones, Blechman, Woltz & Kelly</i>
JoAnn Owens	<i>Ferguson Enterprises</i>
Philip Page, Jr.	<i>Hampton Redevelopment & Housing</i>
Sandra Pierce	<i>Ferguson Enterprises</i>
Angelique Shenk	<i>City of Hampton Neighborhood Office</i>
Art Thatcher	<i>City of Hampton</i>
Anita Walters	<i>City of Newport News</i>



community investment team



Michael Canty
In-Sync Partnership

Don Davis
City of Hampton

Debra Deihl
Ferguson Enterprises

Barbara Easter
Barbara J. Easter & Associates

Ron Ellis
Northrop Grumman Technical Services

Katie Felder
Communities in Schools of Hampton

Patrick Finneran
Newport News Public Schools

Chip Goldstein
Irvin B. Goldstein, P.C.

Chavis Harris
Northrop Grumman Newport News

Diane Keller
Community Volunteer

Henry Mills
Old Point National Bank

Marcus Nieves
Community Volunteer

Debbie Tanner
Riverside Behavioral Health Center

R. Roger Wolfe
Community Health Charities



United Way of the Virginia Peninsula

- 739 thimble shoals blvd., suite 302
- newport news, va 23606
- tel 757.873.9328 • fax 757.873.9329
- www.uwvp.org